

TOWN OF SAN ANSELMO
STAFF REPORT
MAY 9, 2013

For the meeting of May 14, 20

TO: Town Council
FROM: Sean Condry, P.E., Public Works Director
SUBJECT: Town of Ross Bolinas Avenue Safe Paths to School Medians

RECOMMENDATION:

That Town Council acknowledges and files the addition of street medians on Bolinas to improve traffic safety for pedestrians, bicyclists, and motorists.

BACKGROUND AND DISCUSSION:

The Town of San Anselmo has been working with the Town of Ross for several years on a plan to make traffic and pedestrian safety improvements to Bolinas Avenue. The project includes construction of raised medians for traffic separation (combined with pedestrian safety refuge islands, curb extensions to shorten crosswalks), curb ramp, traffic signage, stripes and pavement markings, replacement of traffic signal heads, etc. On April 11, 2013, the Ross Town Council awarded the project to Coastside Concrete the low bidder who is scheduled to start work after June 10, 2013.

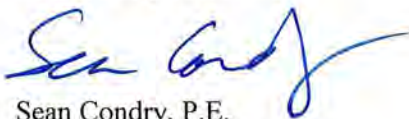
Originally the project incorporated bulb outs as part of the project but it was later determined that this would not meet the improvements that both Towns were seeking which was to slow down traffic. Therefore, street medians were incorporated into the design because of their ability to slow down the traffic on Bolinas Avenue by breaking up the long wide stretch of the street. Medians are needed at three different locations on Bolinas Avenue near the corners of Kensington Road, Richmond Road, and Shady Lane. However, this project will only incorporate one or two of them due to financing with the remaining medians being completed through the One Bay Area Grant (OBAG) awarded to both towns for Bolinas Avenue and Sir Francis Drake improvements or through frontage improvements as part of the Seminary Project.

When completed the medians will be approximately 15' long and 5' wide and it is planned to incorporate landscaping and a tree on each median.

FISCAL IMPACT

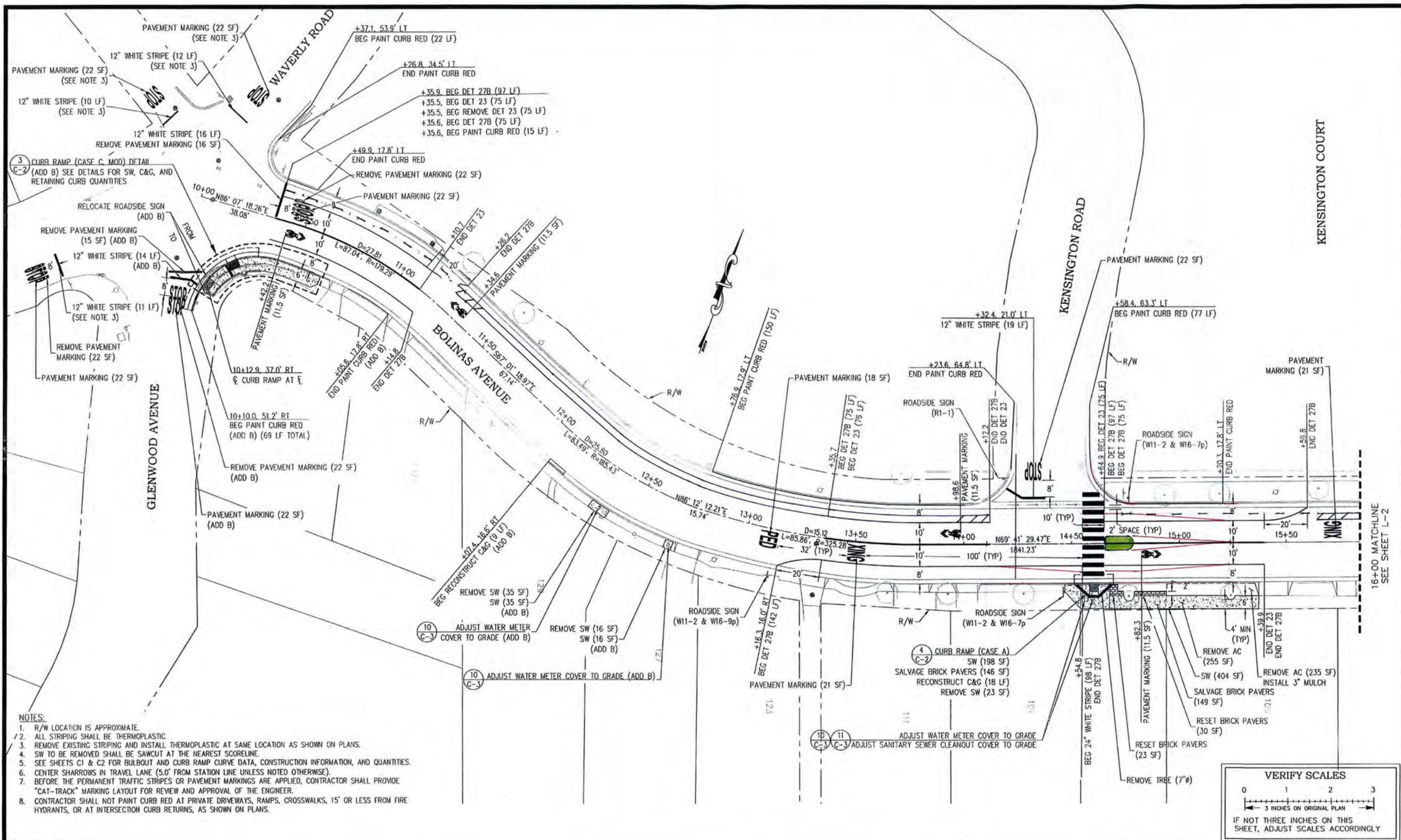
The Bolinas Avenue Safe Paths to School Project is a Town of Ross Project which is funded through the Transportation Authority of Marin so there is no fiscal impact to the Town.

Respectfully submitted,

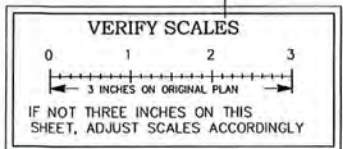


Sean Condry, P.E.
Public Works Director

Attachment: Bolinas Avenue Project Plans



- NOTES:**
1. R/W LOCATION IS APPROXIMATE.
 2. ALL STRIPING SHALL BE THERMOPLASTIC.
 3. REMOVE EXISTING STRIPING AND INSTALL THERMOPLASTIC AT SAME LOCATION AS SHOWN ON PLANS.
 4. SW TO BE REMOVED SHALL BE SAWCUT AT THE NEAREST SCORELINE.
 5. SEE SHEETS C1 & C2 FOR BULBOUT AND CURB RAMP CURVE DATA, CONSTRUCTION INFORMATION, AND QUANTITIES.
 6. CENTER SHARROWS IN TRAVEL LANE (5.0' FROM STATION LINE UNLESS NOTED OTHERWISE).
 7. BEFORE THE PERMANENT TRAFFIC STRIPES OR PAVEMENT MARKINGS ARE APPLIED, CONTRACTOR SHALL PROVIDE "CAT-TRACK" MARKING LAYOUT FOR REVIEW AND APPROVAL OF THE ENGINEER.
 8. CONTRACTOR SHALL NOT PAINT CURB RED AT PRIVATE DRIVEWAYS, RAMPS, CROSSWALKS, 15' OR LESS FROM FIRE HYDRANTS, OR AT INTERSECTION CURB RETURNS, AS SHOWN ON PLANS.



No.	DATE	BY	REVISION

SCALE: 1" = 20'
 DATE: FEB. 20, 2013
 DESIGNED BY: TRO
 DRAWN BY: KS
 CHECKED BY: RTH



HEI HARRISON ENGINEERING INC.
 801 D STREET • SAN RAFAEL, CA 94901
 PHONE (415) 524-4904 • FAX (525) 691-0460

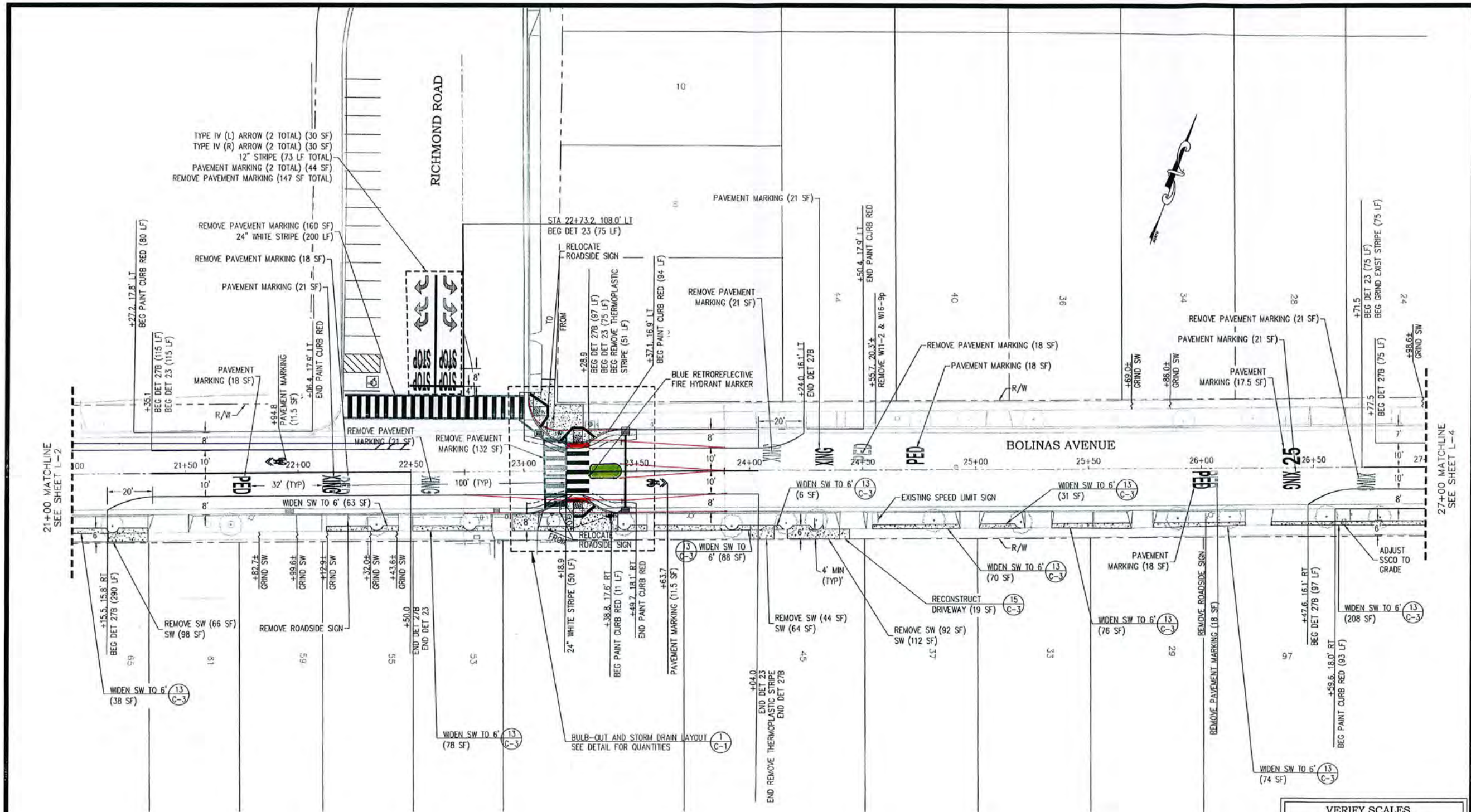


TOWN OF ROSS
 31 SIR FRANCIS DRAKE BOULEVARD
 ROSS, CA 94957
 PHONE: (415) 453-1453

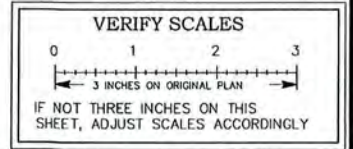
CONSTRUCTION LAYOUT PLAN
 BOLINAS AVENUE
 SAFE PATHWAYS TO SCHOOL PROJECT

SHEET
 L-1
 2 OF 12

BOLINAS



FOR NOTES SEE SHEET L-1



No.	DATE	BY	REVISION

SCALE: 1" = 20'
 DATE: FEB. 20, 2013
 DESIGNED BY: TRO
 DRAWN BY: KS
 CHECKED BY: RTH



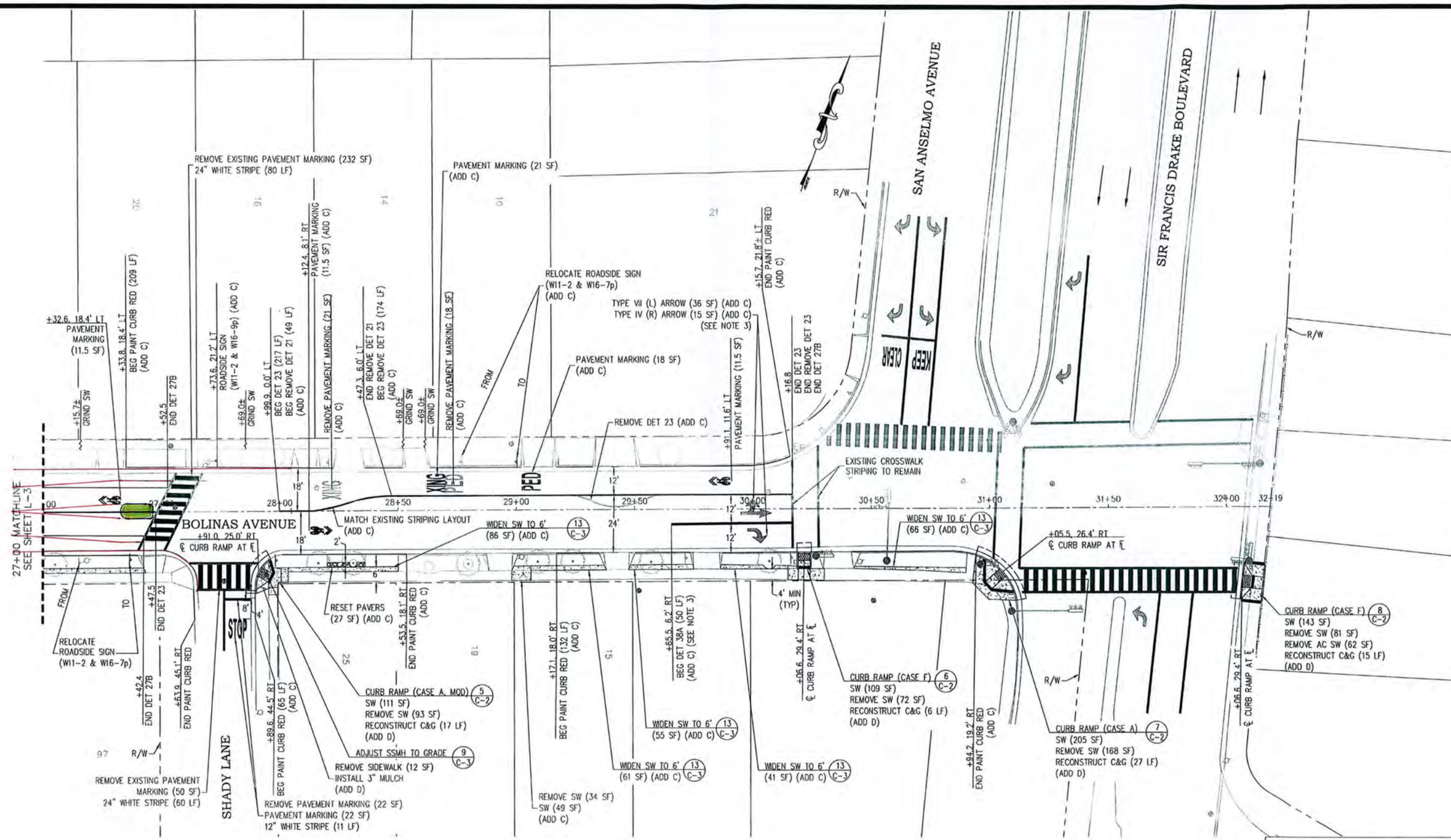
HEI HARRISON ENGINEERING INC.
 801 O STREET • SAN RAFAEL, CA 94901
 PHONE (415) 524-4994 • FAX (925) 691-0460



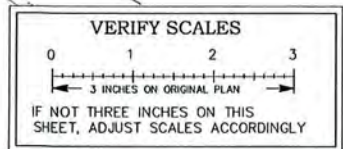
TOWN OF ROSS
 31 SIR FRANCIS DRAKE BOULEVARD
 ROSS, CA 94957
 PHONE: (415) 453-1453

CONSTRUCTION LAYOUT PLAN
 BOLINAS AVENUE
 SAFE PATHWAYS TO SCHOOL PROJECT

SHEET
 L-3
 4 OF 12



FOR NOTES SEE SHEET L-1



No.	DATE	BY	REVISION

SCALE: 1" = 20'
 DATE: FEB. 20, 2013
 DESIGNED BY: TRO
 DRAWN BY: KS
 CHECKED BY: RTH



HEI HARRISON ENGINEERING INC.
 802 D STREET • SAN RAFAEL, CA 94901
 PHONE (415) 524-4904 • FAX (925) 691-0402



TOWN OF ROSS
 31 SIR FRANCIS DRAKE BOULEVARD
 ROSS, CA 94957
 PHONE: (415) 453-1453

CONSTRUCTION LAYOUT PLAN
 BOLINAS AVENUE
 SAFE PATHWAYS TO SCHOOL PROJECT

SHEET
 L-4
 5 OF 12