

# **Downtown San Anselmo Parking Study**

## **Purpose**

Identification, documentation, and evaluation of existing uses of parking resources in the Downtown San Anselmo Area. The study will also recommend strategies to efficiently manage both supply and occupancy of parking within the downtown San Anselmo area.

## **Study Extents**

The study area will include parking provided along all streets encompassed by the following boundaries (and illustrated in Figure 1).

- Redhill Avenue from the Hub to Hilldale Drive
- Cedar Street from Tamalpais Avenue to Belle Avenue
- Sir Francis Drake Boulevard from Redhill Avenue to Bolinas Avenue including Lincoln Park neighborhood

## **Task 1: Data Collection**

- Field visits to inventory existing on- and off-street parking supply and regulations
- Parking occupancy counts – to determine parking utilization for on-street and off-street parking spaces within the parking surveys.
  - Surveys will be conducted on three mid-week days and one weekend day
  - Weekday surveys will be conducted for a continuous 12-hour period between 8:00 AM and 8:00 PM in two-hour intervals (for a total of 6 survey periods)
  - Weekend Surveys will be conducted for a continuous 8-hour period between 10:00 AM and 6:00 PM in two-hour intervals (for a total of 6 survey periods)
- Parking duration surveys – to determine the average parking duration per vehicle parked in the study area
  - Duration counts will be conducted during the same 12-hour period (in two-hour intervals) during the three mid-week survey days
  - Duration counts will only include vehicles parked along Sir Francis Drake Blvd, Redhill Avenue, Greenfield Avenue, and any parking provided within the Hub.
  - Duration of stay will be determined by noting partial license plate numbers of vehicles occupying parking stalls along street segments identified in the sub-bullet above.

## **Task 2: Data Evaluation and Summary**

- Quantitatively summarize data collected in Task 1
- Report average weekday and average weekend parking occupancy rates
- Report average, minimum and maximum weekday parking duration for streets identified in Task 1
- Identify peak hour for parking occupancy by location

## **Task 3: Stakeholder Engagement**

- Attend up to three meetings with representatives from City staff and county law enforcement
  - Present results of Task 1 and 2
  - Discuss potential parking improvement strategies

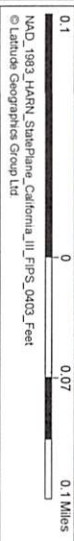
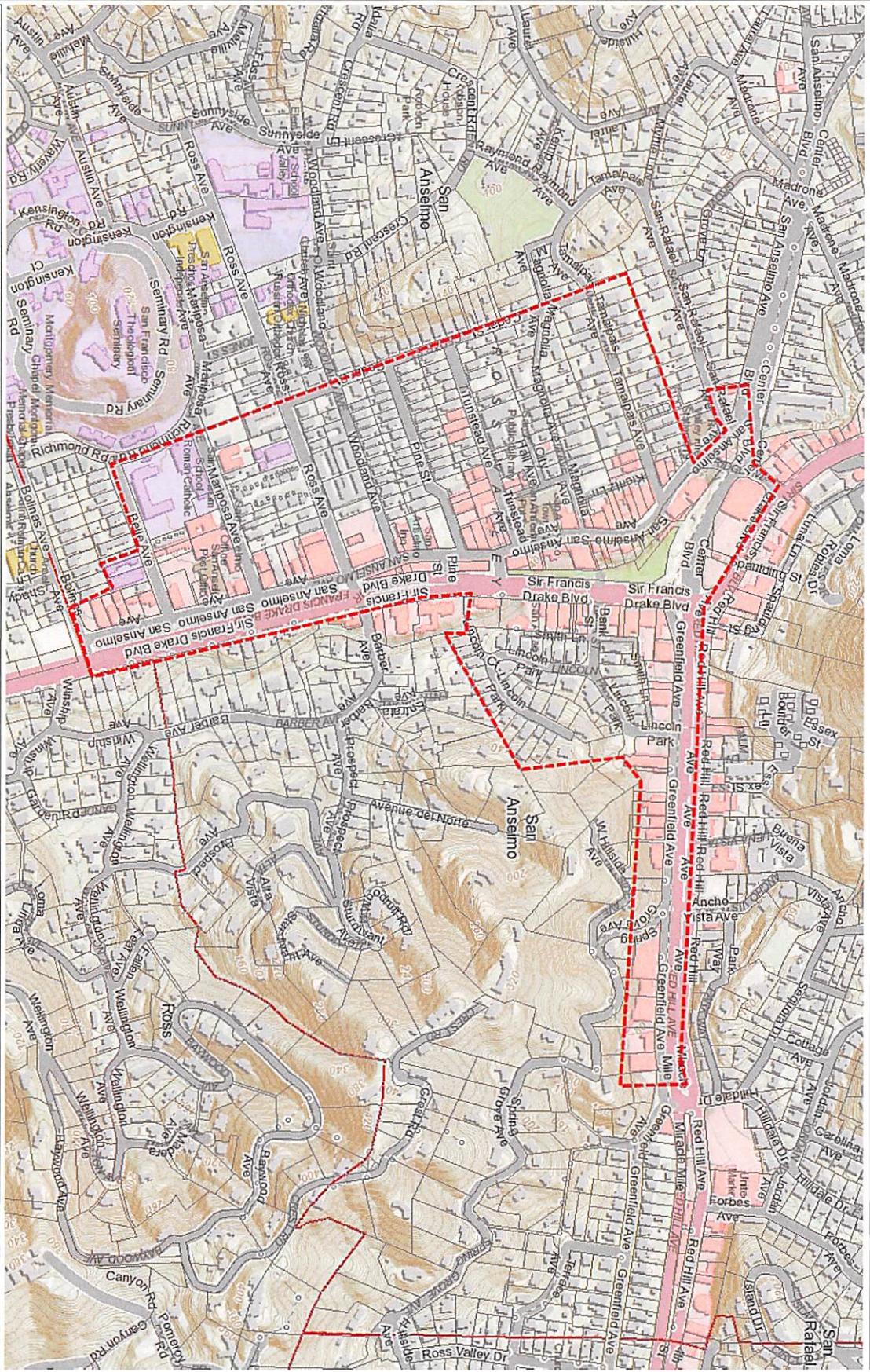
## **Task 4: Documentation and Recommendations**

- Quantitatively summarize data collected in Task 1 and Task 2
- Incorporate the Town's downtown growth projections into recommendations
- Research and recommend technologies associated with parking fee collection
- Provide recommendations (with input from Task 3) for improvement to parking resource management
- Prepare downtown area parking map illustrating existing and proposed parking regulation

## **Task 5: Present to Town Council**

Staff to attend one Town Council Meeting to present study and recommendations

Parking Study Area



0.1  
0  
0.07  
0.1 Miles

NAD 1983 NAD81 StatePlane, California III FIPS 5003 Feet  
© Landstar Geographics Group Ltd

This map is a user generated static output from an internet mapping site and is for reference only. Data layers that appear on this map may or may not be accurate, current, or otherwise reliable.  
THIS MAP IS NOT TO BE USED FOR NAVIGATION



- Legend**
- Address
  - Parcel Secured
  - Condominium Common Area
  - Mobile Home Pad
  - City
  - Community
  - Main County Legal Boundary
  - Other Bay Area County
  - Ocean and Bay

1:4,750

Notes

