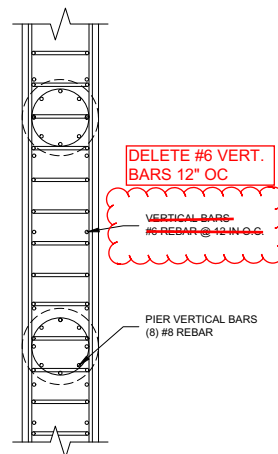


1 TYPICAL PIER GRADE BEAM CROSS SECTION (NTS)

HOOK DEVELOPMENT LENGTH (L_d) (IN)

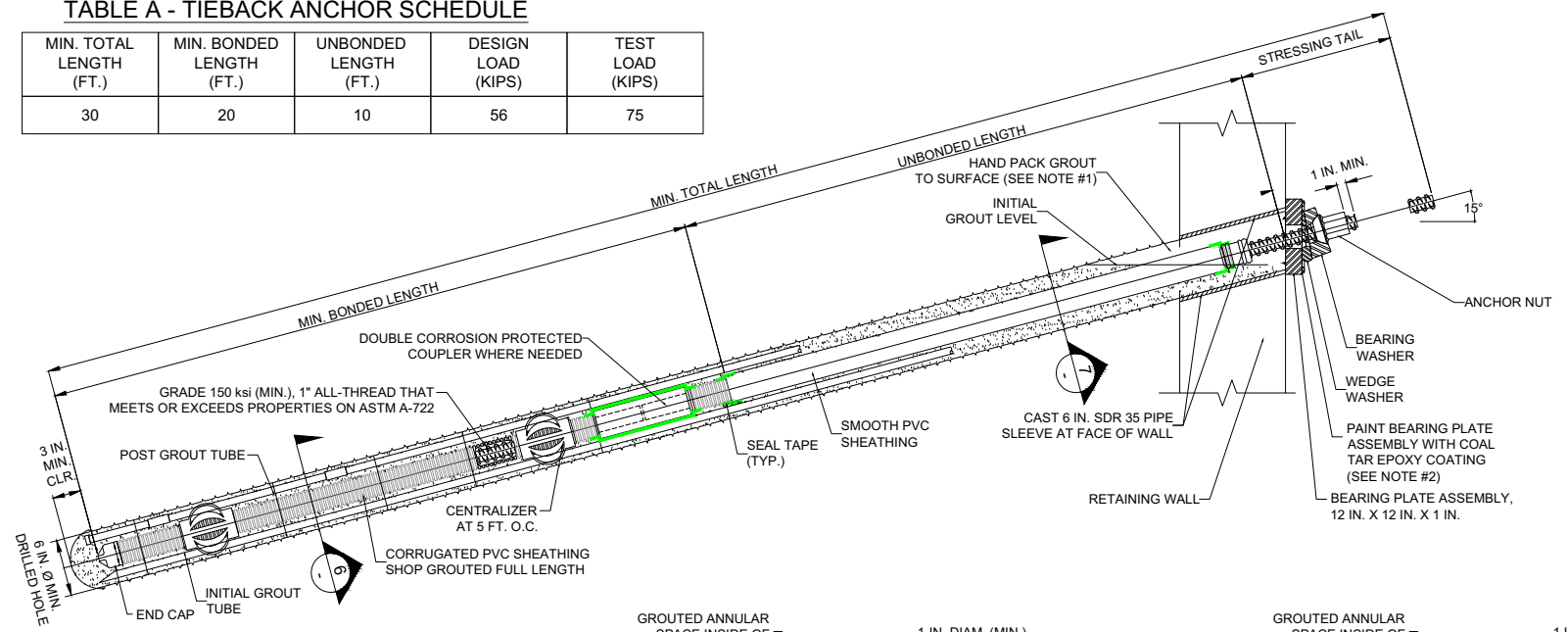
BAR SIZE	f _c =2500 PSI	f _c =3000 PSI	f _c =3500 PSI
#3	9	8	8
#4	12	11	10
#5	15	14	13
#6	18	16	15
#7	21	19	18
#8	24	22	20
#9	28	25	23



2 TYPICAL GRADE BEAM CROSS SECTION (NTS)

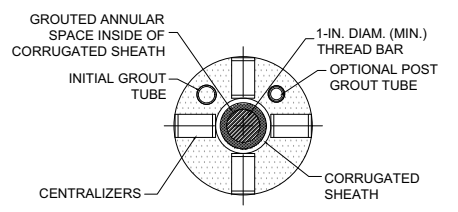
TABLE A - TIEBACK ANCHOR SCHEDULE

MIN. TOTAL LENGTH (FT.)	MIN. BONDED LENGTH (FT.)	UNBONDED LENGTH (FT.)	DESIGN LOAD (KIPS)	TEST LOAD (KIPS)
30	20	10	56	75

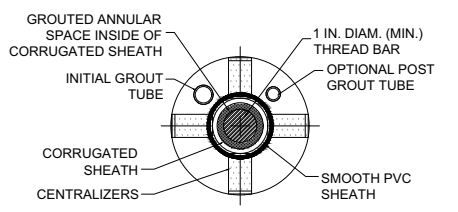


- TIEBACK NOTES:
- HAND PACK GROUT IN REMAINING VOID UPON COMPLETION OF ANCHOR TEST LOADING AND FINAL ANCHOR LOCK-OFF
 - AFTER HAND-PACKED GROUT HAS CURED, PAINT EXPOSED BAR, PLATE ASSEMBLY, WASHER AND NUT WITH COAL-TAR EPOXY COATING

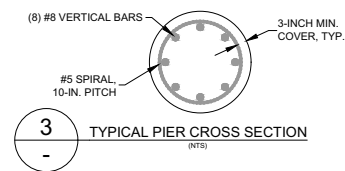
5 TIEBACK DETAIL (NO SCALE)



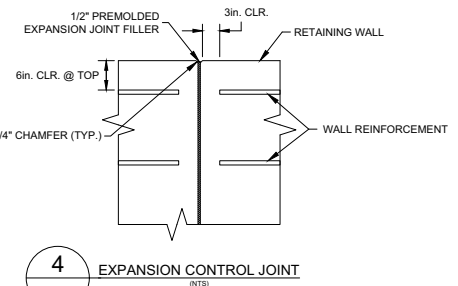
6 BONDED TIEBACK SECTION (NO SCALE)



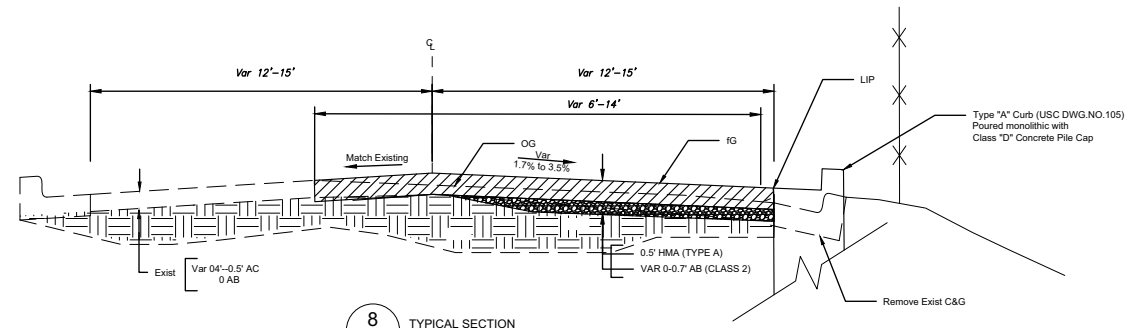
7 UNBONDED TIEBACK SECTION (NO SCALE)



3 TYPICAL PIER CROSS SECTION (NTS)

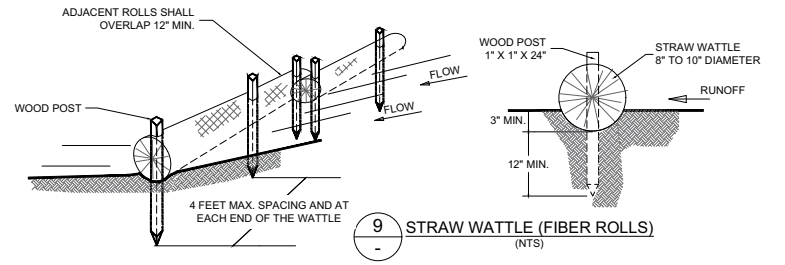


4 EXPANSION CONTROL JOINT (NTS)

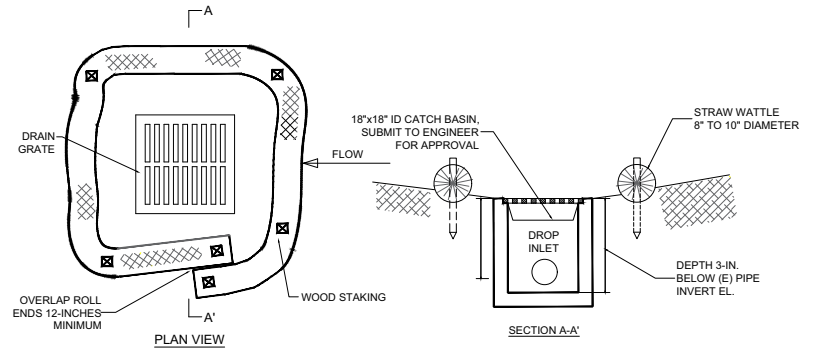


8 TYPICAL SECTION (NTS)

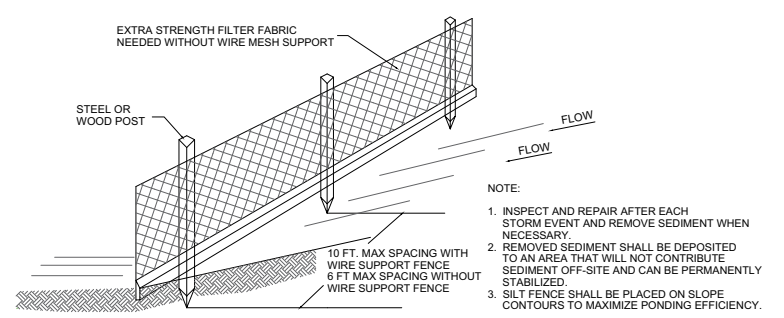
NOTE: STRAW WATTLES SHALL BE MADE WITH 100% RICE STRAW AND BE 100% CALIFORNIA CERTIFIED WEED SEED FREE.



9 STRAW WATTLE (FIBER ROLLS) (NTS)



10 CATCH BASIN SEDIMENT BARRIER (NTS)



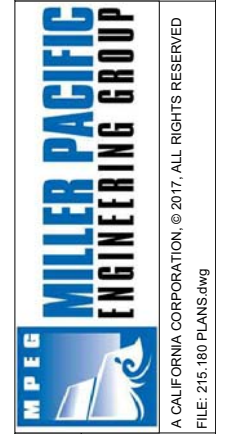
11 SILT FENCE (NTS)

- NOTE:
- INSPECT AND REPAIR AFTER EACH STORM EVENT AND REMOVE SEDIMENT WHEN NECESSARY.
 - REMOVED SEDIMENT SHALL BE DEPOSITED TO AN AREA THAT WILL NOT CONTRIBUTE SEDIMENT OFF-SITE AND CAN BE PERMANENTLY STABILIZED.
 - SILT FENCE SHALL BE PLACED ON SLOPE CONTOURS TO MAXIMIZE PONDING EFFICIENCY.

Revisions

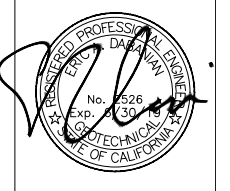
1	REBAR	4/27/18	ED	By

504 Redwood Blvd.
Suite 220
Novato, CA 94947
T 415 / 382-3444
F 415 / 382-3450
www.millerpac.com



Designed	Date	Drawn	Date	Checked	Date	EAD	Date
MMT	3/26/18	MMT	3/26/18	EAD	3/26/18		

DETAILS
Slope Stabilization
139 Oak Springs Drive
San Anselmo, California
Project No. 215.180
Date: 1/30/2018



SHEET
3